



LINE CROSSING ANALYTICS

Detect a person or vehicle matching specified parameters crossing a user-defined line



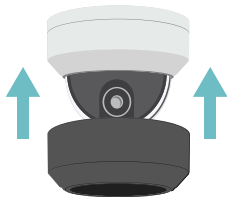
PERSON/VEHICLE ANALYTICS

Detect a person or vehicle matching specified parameters entering a user-defined area



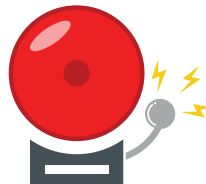
CORRIDOR MODE

Optimize monitoring for vertical spaces such as hallways, stairs, tunnels and roads



PAINTABLE COVER

Optional snap-on cover is paintable to match the color of its surroundings



ALARM I/O

Alarm connections wire the camera directly to alarm devices



TRUE WDR

True Wide Dynamic Range ensures clear video even in installations with high-contrast areas

CAMERA SPECIFICATIONS

IMAGE	
Image sensor	1/2.8", 2MP, Progressive Scan, CMOS
Shutter	Auto/Manual; 1 ~ 1/100000s
Lens	2.8mm Fixed
Max Resolution	1920x1080
Aspect Ratio	16:9
Field of View	105°
Day/Night	True Day / Night w/ IR-Cut Filter
Wide Dynamic Range (WDR)	True WDR @ 2MP; 120dB
IR	Adaptive IR; up to 98'
Analytics	Person, Vehicle, and Line Crossing Analytics

VIDEO CONTROL	
Video Streams	2
Compression	H.264 / H.265 / MJPEG
Max Frame rate	Primary Stream: 30FPS @ 1920x1080
Day/Night	Auto / Day / Night
White Balance	Auto / Manual / Scene
OSD	Up to 8 OSDs
ROI	Up to 8 areas
Motion Detection	Up to 4 areas
Privacy Masking	Up to 4 areas
Image Rotation	Flip Vertical, Flip Horizontal, 180°, 90° Clockwise, 90° Counter-clockwise

AUDIO	
Audio In/Out	1 / 1
Compression	G.711A, G.711U
Two-Way Audio	Yes
Suppression	Yes

HARDWARE	
Housing / Dome Cover	Metal / Polycarbonate
Ingress Protection	IP67
Impact Rating	IK10
Dimensions	Ø4.3" x 3.2" (Ø109 x 81mm)
Weight	0.93lb (0.45kg)
Alarm In / Relay Out	1 / 1
Pan / Tilt / Rotate	Pan: 3° ~ 360° Tilt: 0° ~ 68° Rotate: 3° ~ 360°
Country of Origin	China
NDA Compliant	Yes

CAMERA SPECIFICATIONS (CONTINUED)

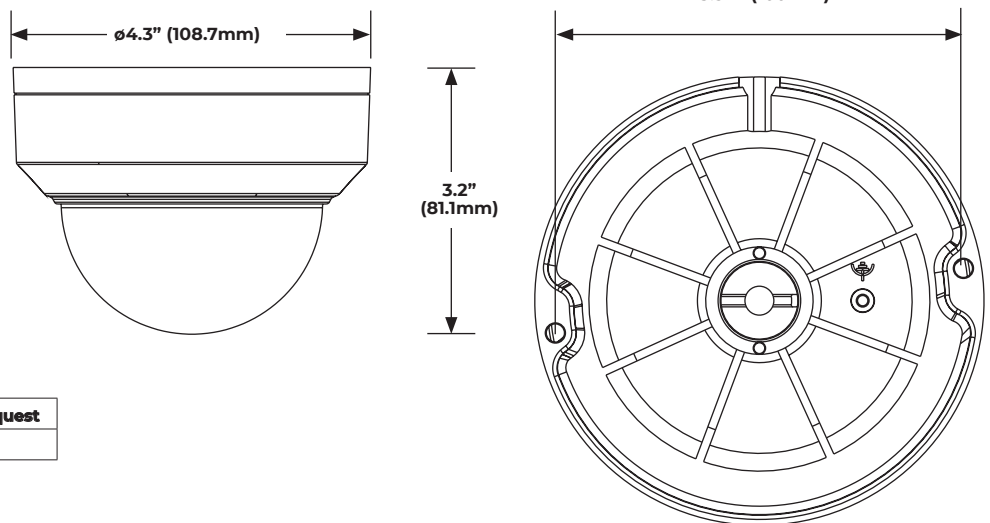
NETWORK	
Connector	RJ45
Network	10/100Mbps
ONVIF®	Profile S / G / T
POWER	
Power Consumption	Max 5W
Power Source	PoE (IEEE 802.3af) / DC 12V±25%
ENVIRONMENTAL	
Operating Environment	-22°F ~ 140°F (-30°C~60°C)
Humidity	≤95% RH (non-condensing)
STORAGE	
Onboard Storage	MicroSD card; Up to 512GB
Network	Supported
CERTIFICATIONS	
Certifications	UL / CE / FCC Class A

ADDITIONAL IMAGES

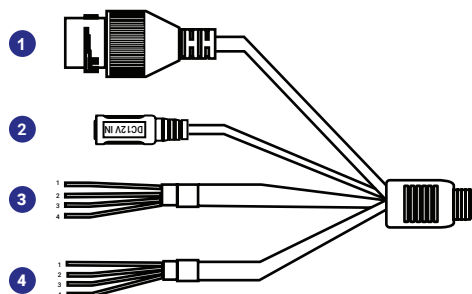


A paintable dome cover is available free of charge by request
 Part Number OE-CA00PDC-02

DIMENSIONS



CONNECTIONS



1	RJ-45	For network and PoE connections
2	Power (12vDC)	Power connection
3	Audio I/O	Grey Audio Out
		Purple Ground
		Green Audio In
		Brown Ground
4	Alarm I/O	Yellow Alarm Out +
		White Alarm Out -
		Orange Alarm Input
		Blue Ground

Only one audio channel can be active at a time.
 Please see manual for more details.

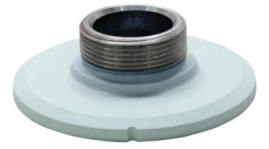
ACCESSORIES



10-Series Adapter Plate
OE-CA10AP-01



10-Series Junction Box
OE-CA10JB-01



10-Series Pendant Cap
OE-CA10PC-01



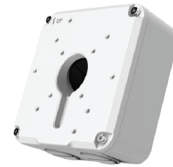
10-Series Wall Mount
OE-CA10WM-01



Paintable Dome Cover
OE-CA00PDC-02



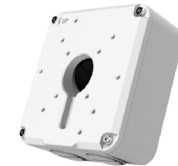
10-Series Wall Mount
OE-CA10WM-01



Indoor/Outdoor 7" Junction Box
OE-CA00JB-01



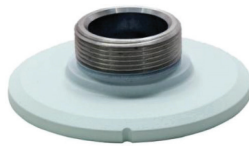
10-Series Wall Mount
OE-CA10WM-01



Indoor/Outdoor 7" Junction Box
OE-CA00JB-01



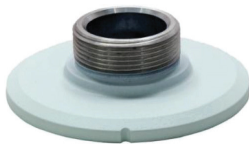
Pole Mount Kit
OE-CA00PMK-01



10-Series Pendant Cap
OE-CA10PC-01



Indoor/Outdoor Wall Mount
OE-CA00WM-01



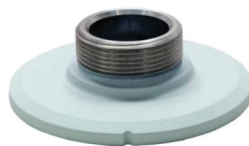
10-Series Pendant Cap
OE-CA10PC-01



Indoor/Outdoor Wall Mount
OE-CA00WM-01



Corner Mount
OE-CA00CM-01



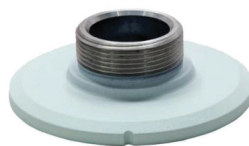
10-Series Pendant Cap
OE-CA10PC-01



Indoor/Outdoor Wall Mount
OE-CA00WM-01



Pole Mount Kit
OE-CA00PMK-02



10-Series Pendant Cap
OE-CA10PC-01



Ceiling-Mounted Pole
OE-CA00CMP-01