



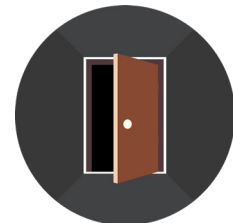
**LINE CROSSING ANALYTICS**

Detect a person or vehicle matching specified parameters crossing a user-defined line



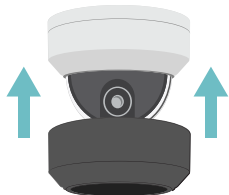
**PERSON/VEHICLE ANALYTICS**

Detect a person or vehicle matching specified parameters entering a user-defined area



**CORRIDOR MODE**

Optimize monitoring for vertical spaces such as hallways, stairs, tunnels and roads



**PAINTABLE COVER**

Optional snap-on cover is paintable to match the color of its surroundings



**ADAPTIVE IR LEDs**

Smart IR technology for clear pictures in total darkness



**TRUE WDR**

True Wide Dynamic Range ensures clear video even in installations with high-contrast areas

## CAMERA SPECIFICATIONS

| IMAGE                    |                                    |
|--------------------------|------------------------------------|
| Image sensor             | 1/3", 4MP, Progressive Scan, CMOS  |
| Shutter                  | Auto/Manual; 1 ~ 1/1000000s        |
| Lens                     | 2.8mm Fixed                        |
| Max Resolution           | 2688x1520                          |
| Aspect Ratio             | 16:9                               |
| Field of View            | 101°                               |
| Day/Night                | True Day / Night w/ IR-Cut Filter  |
| Wide Dynamic Range (WDR) | True WDR @ 4MP; 120dB              |
| IR                       | Adaptive IR; up to 98'             |
| Analytics-enabled        | Person, Vehicle, and Line Crossing |

| VIDEO CONTROL               |  |
|-----------------------------|--|
| Configurable Video Profiles | Main Profile, High Profile   |
| Compression                 | H.264 & MJPEG  |
| Max Frame rate              | Primary Stream: 30FPS @ 2688x1520  |
| Day/Night                   | Auto / Day / Night   |
| White Balance               | Auto / Manual / Scene  |
| BLC                         | Yes  |
| OSD                         | Up to 8 OSDs   |
| ROI                         | Up to 8 areas  |
| Motion Detection            | Up to 4 areas  |
| Privacy Masking             | Up to 4 areas  |
| Image Rotation              | Flip Vertical, Flip Horizontal, 180°, 90° Clockwise, 90° Counter-clockwise |

| AUDIO         |                           |
|---------------|---------------------------|
| Audio In/Out  | 1 - Line In, 1 - Line out |
| Compression   | G.711A, G.711U            |
| Two-way audio | Yes                       |
| Suppression   | Yes                       |

| HARDWARE             |  |
|----------------------|--|
| Housing / Dome Cover | Metal / Polycarbonate  |
| Ingress Protection   | IP67   |
| Impact Rating        | IK10   |
| Dimensions           | Ø4.3" x 3.2" (Ø109 x 81mm)   |
| Weight               | 0.99lb (0.45kg)  |
| Alarm In / Relay Out | 1 / 1  |
| Pan / Tilt / Rotate  | <b>Pan:</b> 3° ~ 360° <b>Tilt:</b> 0° ~ 68° <b>Rotate:</b> 3° ~ 360° |
| Country of Origin    | China  |
| NDAA Compliant       | Yes  |

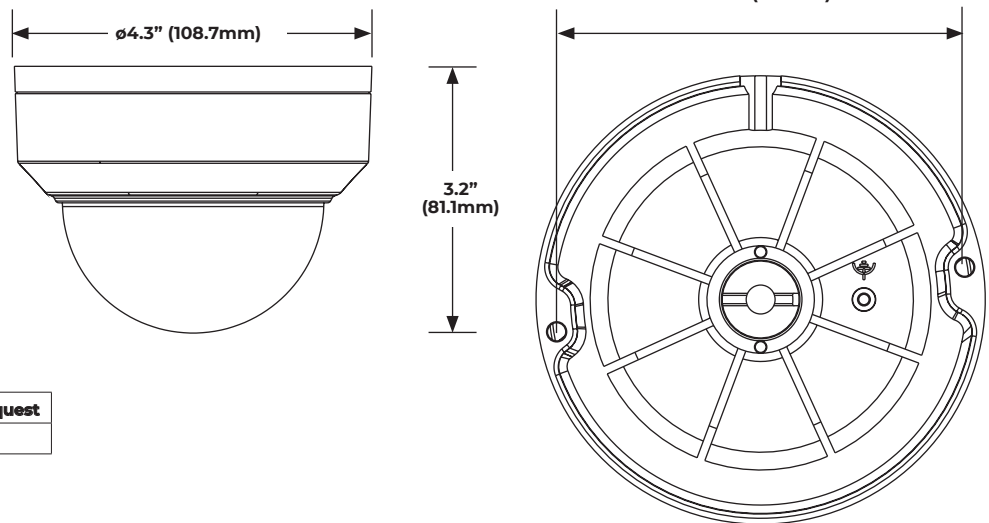
## CAMERA SPECIFICATIONS (CONTINUED)

| NETWORK               |                                 |
|-----------------------|---------------------------------|
| Connector             | RJ45                            |
| Network               | 10/100Mbps                      |
| ONVIF®                | Profile S / G / T               |
| POWER                 |                                 |
| Power Consumption     | Max 4.5W                        |
| Power Source          | PoE (IEEE 802.3af) / DC 12V±25% |
| ENVIRONMENTAL         |                                 |
| Operating Temperature | -22°F ~ 140°F (-30°C~60°C)      |
| Humidity              | ≤95% RH (non-condensing)        |
| STORAGE               |                                 |
| Onboard Storage       | MicroSD card; Up to 512GB       |
| Network               | Supported                       |
| CERTIFICATIONS        |                                 |
| Certifications        | UL / CE / FCC Class A           |

## ADDITIONAL IMAGES



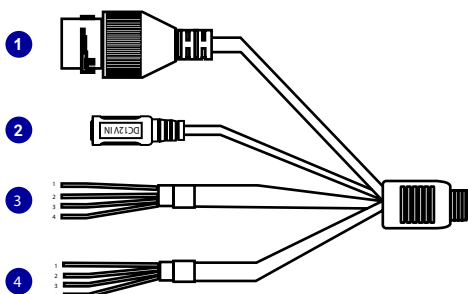
## DIMENSIONS



A paintable dome cover is available free of charge by request

Part Number OE-CA00PDC-02

## CONNECTIONS



|   |               |                                 |             |
|---|---------------|---------------------------------|-------------|
| 1 | RJ-45         | For network and PoE connections |             |
| 2 | Power (12VDC) | Power connection                |             |
| 3 | Audio I/O     | Gray                            | Audio Out   |
|   |               | Purple                          | Ground      |
|   |               | Green                           | Audio In    |
|   |               | Brown                           | Ground      |
| 4 | Alarm I/O     | Yellow                          | Alarm Out + |
|   |               | White                           | Alarm Out - |
|   |               | Orange                          | Alarm Input |
|   |               | Blue                            | Ground      |

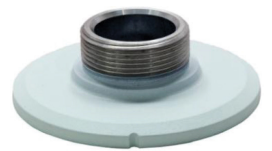
**ACCESSORIES**



10-Series Wall Mount  
**OE-CA10WM-01**



10-Series Junction Box  
**OE-CA10JB-01**



10-Series Pendant Cap  
**OE-CA10PC-01**



Paintable Dome Cover  
**OE-CA00PDC-02**



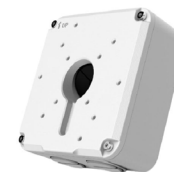
10-Series Wall Mount  
**OE-CA10WM-01**



Indoor/Outdoor 7" Junction Box  
**OE-CA00JB-01**



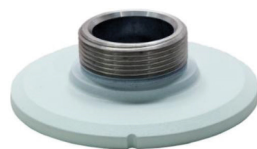
10-Series Wall Mount  
**OE-CA10WM-01**



Indoor/Outdoor 7" Junction Box  
**OE-CA00JB-01**



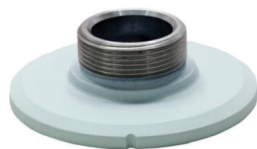
Pole Mount Kit  
**OE-CA00PMK-01**



10-Series Pendant Cap  
**OE-CA10PC-01**



Indoor/Outdoor Wall Mount  
**OE-CA00WM-01**



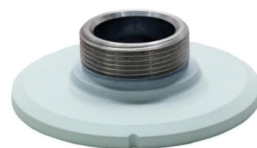
10-Series Pendant Cap  
**OE-CA10PC-01**



Indoor/Outdoor Wall Mount  
**OE-CA00WM-01**



Corner Mount  
**OE-CA00CM-01**



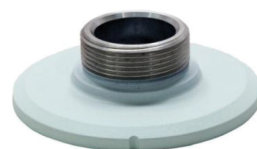
10-Series Pendant Cap  
**OE-CA10PC-01**



Indoor/Outdoor Wall Mount  
**OE-CA00WM-01**



Pole Mount Kit  
**OE-CA00PMK-02**



10-Series Pendant Cap  
**OE-CA10PC-01**



Ceiling-Mounted Pole  
**OE-CA00CMP-01**