



LINE CROSSING ANALYTICS

Detect a person or vehicle matching specified parameters crossing a user-defined line



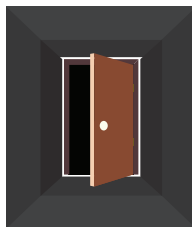
PERSON/VEHICLE ANALYTICS

Detect a person or vehicle matching specified parameters entering a user-defined area



TRUE DAY / NIGHT

True Day / Night provides superior video in a variety of lighting conditions



CORRIDOR MODE

Optimize monitoring for vertical spaces such as hallways, stairs, tunnels and roads



TRUE WDR

True Wide Dynamic Range ensures clear video even in installations with high-contrast areas

CAMERA SPECIFICATIONS

IMAGE	
Image sensor	1/2.8", 2MP, Progressive Scan, CMOS
Shutter	Auto/Manual; 1 ~ 1/1000000s
Lens	2.8 Fixed
Max Resolution	1920x1080
Aspect Ratio	16:9
Field of View	106.7°
Day/Night	True Day / Night w/ IR-Cut Filter
Wide Dynamic Range (WDR)	True WDR @ 2MP; 120dB
IR	Adaptive IR; up to 98'
Analytics-enabled	Person, Vehicle, and Line Crossing

VIDEO CONTROL	
Configurable Video Profiles	Main Profile, High Profile
Compression	H.264 & MJPEG
Max Frame rate	Primary Stream: 30FPS @ 1920x1080
Day/Night	Auto / Day / Night
White Balance	Auto / Manual / Scene
OSD	Up to 8 OSDs
ROI	Up to 8 areas
Motion Detection	Up to 4 areas
Privacy Masking	Up to 4 areas
Image Rotation	Flip Vertical, Flip Horizontal, 180°, 90° Clockwise, 90° Counter-clockwise

AUDIO	
Audio In/Out	Built-in Mic
Compression	G.711A, G.711U
Suppression	Yes

NETWORK	
Connector	RJ45
Network	10/100Mbps
ONVIF®	Profile S / G / T

HARDWARE	
Housing / Dome Cover	Metal / Polycarbonate
Ingress Protection	IP67
Dimensions	Ø4.4" x 3.7" (Ø110 x 94mm)
Pan / Tilt / Rotate	Pan: 0° ~ 360° Tilt: 0° ~ 80° Rotate: 0° ~ 360°
Weight	0.93lb (0.42kg)
Country of Origin	China
NDAA Compliant	Yes

CAMERA SPECIFICATIONS (CONTINUED)

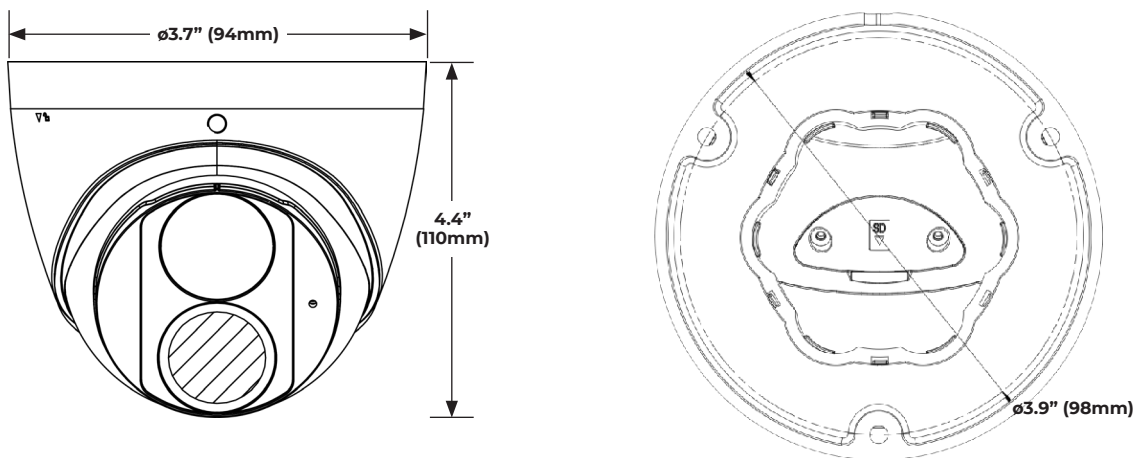
POWER	
Power Consumption	Max 5W
Power Source	PoE (IEEE 802.3af) / DC 12V±25%

ENVIRONMENTAL	
Operating Temperature	-22°F ~ 140°F (-30°C~60°C)
Humidity	≤ 95% RH

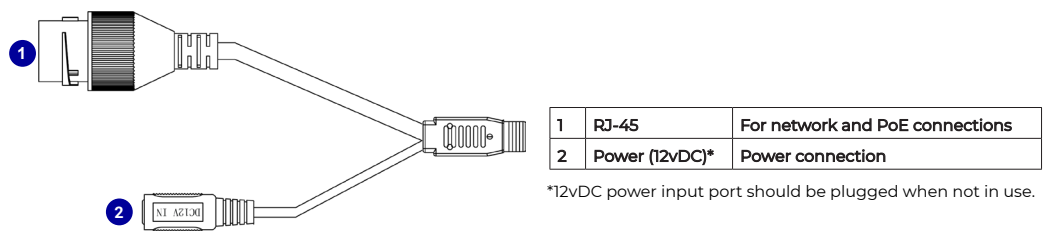
STORAGE	
Onboard Storage	MicroSD card; Up to 512GB
Network	Supported

CERTIFICATIONS	
Safety	UL
EMC	UL / CE / FCC Class A

DIMENSIONS



CONNECTIONS



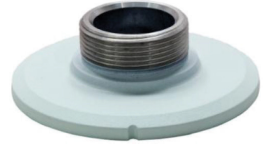
ACCESSORIES



10-Series Wall Mount
OE-CA10WM-01



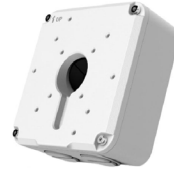
10-Series Junction Box
OE-CA10JB-01



10-Series Pendant Cap
OE-CA10PC-01



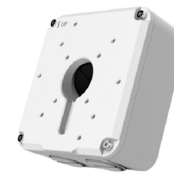
10-Series Wall Mount
OE-CA10WM-01



Indoor/Outdoor 7" Junction Box
OE-CA00JB-01



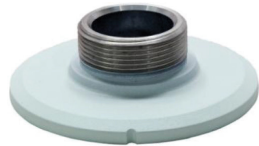
10-Series Wall Mount
OE-CA10WM-01



Indoor/Outdoor 7" Junction Box
OE-CA00JB-01



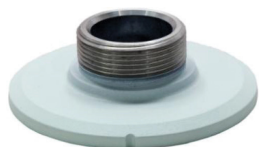
Pole Mount Kit
OE-CA00PMK-01



10-Series Pendant Cap
OE-CA10PC-01



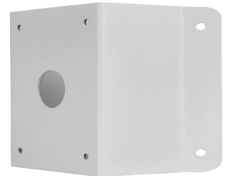
Indoor/Outdoor Wall Mount
OE-CA00WM-01



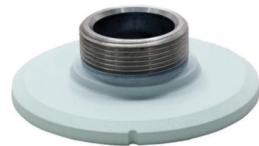
10-Series Pendant Cap
OE-CA10PC-01



Indoor/Outdoor Wall Mount
OE-CA00WM-01



Corner Mount
OE-CA00CM-01



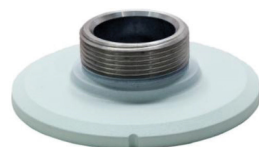
10-Series Pendant Cap
OE-CA10PC-01



Indoor/Outdoor Wall Mount
OE-CA00WM-01



Pole Mount Kit
OE-CA00PMK-02



10-Series Pendant Cap
OE-CA10PC-01



Ceiling-Mounted Pole
OE-CA00CMP-01