



OE-CC3020D5

5MP Cloud IP Dome Camera

Equipped with a 5MP lens, the OE-CC3020D5 cloud camera features onboard recording, a dedicated analytics processor, and all the benefits of OpenEye Web Services.



ONBOARD RECORDING

Record directly on the camera and access video seamlessly from the cloud.



ADVANCED ANALYTICS

Get a more intelligent & aware solution with advanced analytics processing.



5MP

Experience clear imagery with 5MP resolution, boosting your video quality.



HIGH DYNAMIC RANGE

Achieve crystal clear image clarity in diverse lighting with advanced HDR technology.



CLOUD CAMERA

Streamline surveillance with an all-in-one video solution, featuring onboard recording and advanced analytics processing.



CAMERA SPECIFICATIONS

OPTICAL

Image Sensor	Sony IMX675 (1/2.8" Progressive CMOS)
Effective Pixels	5MP (2592x1944)
Lens Type	Fixed
Focal Length	2.8mm
Field of View	97°
Iris	Fixed
Day/Night	Auto (ICR)
Dynamic Range	Digital Overlap High Dynamic Range
IR Cut Filter	Yes
IR Range	Up to 98'

VIDEO SETTINGS

Compression	H.264
Configurable Video Profiles	Main Profile, High Profile
Frame Rate	Up to 30FPS
Image Rotation	0°, 90°, 270°, Image Flip, Image Mirror

CONNECTIONS

Ethernet	RJ45, 10/100Mbps
Power Source	PoE 802.3af/12vDC
Onboard Storage	512GB, 1TB, 1.5TB MicroSD, SDXC

GENERAL

CPU	Ambarella CV22S66
OWS AI Capable	Smart Motion, Person, Vehicle, Intrusion, Loitering, Line Crossing Analytics dependent on license tier. See OWS Licensing for more information.
Ingress Protection	IP66
Impact Rating	IK10
Operating Temperature	-4° ~ 140°F (-20° ~ 60°C)
Humidity	90% R.H.
Dimensions	4.7" x 3.1" (120 x 78.5mm)
Weight	1.5 Lbs (0.7Kg)
Pan/Tilt/Rotate	Pan: 360° Tilt: 60° Rotate: 90°
Country of Origin	Taiwan
NDAA Compliant	Yes

POWER

Max Power Consumption (IR On)	PoE: 6.5W 12VDC: 6.2W
-------------------------------	-------------------------

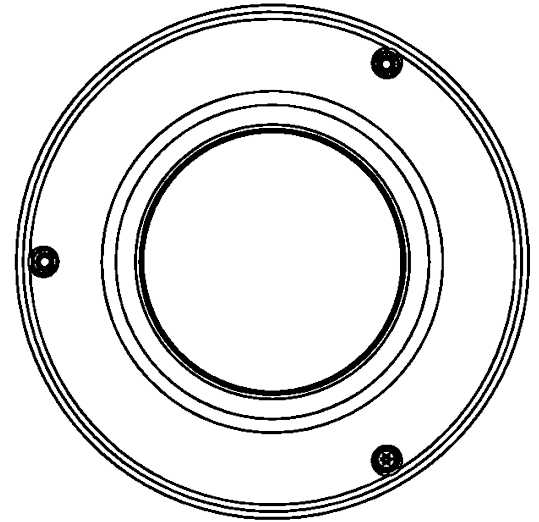
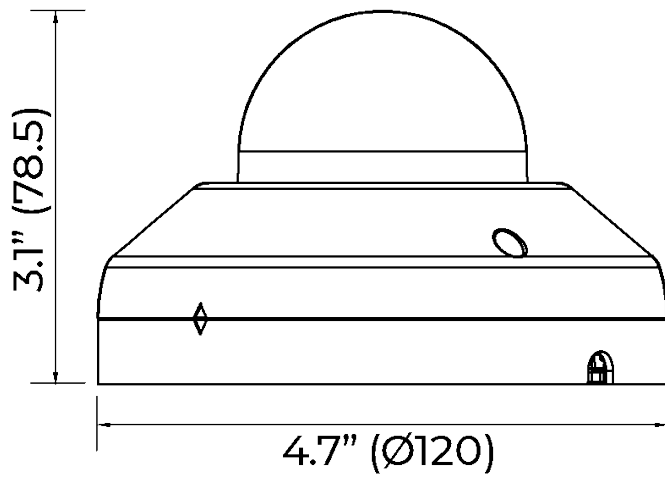
ACTIVE DETERRENCE

Active Deterrent Illumination	-
Active Deterrent Audio	-

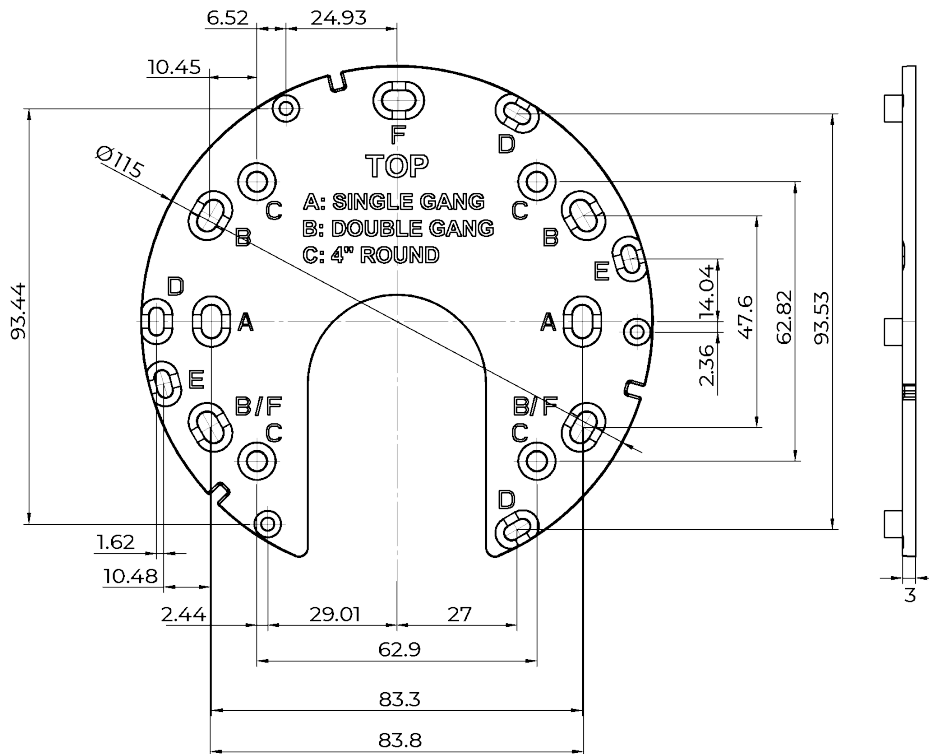
CERTIFICATIONS

Certifications	UL, cUL, CE, UKCA, FCC Part 15 Subpart B Class A
----------------	--

DIMENSIONS



ADAPTER PLATE



ADAPTER PLATE COMPATIBILITY

- A: Single Gang Electrical Box
- B: Double Gang Electrical Box
- C: 4" Round Electrical Box
- D: OE-CA30PC-01
- E: OE-CA30JB-01
- F: OE-CA30WM-01



30-Series Junction Box
OE-CA30JB-01



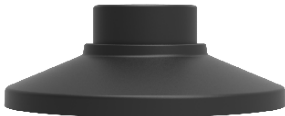
30-Series Pendant Cap
OE-CA30PC-01



30-Series Wall Mount
OE-CA30WM-01



30-Series Junction Box
OE-CA30JB-01B



30-Series Pendant Cap
OE-CA30PC-01B



30-Series Wall Mount
OE-CA30WM-01B

Accessory Kits



30-Series Wall Mount Kit
with Outdoor Junction Box
OE-CA30WMKIT-01



30-Series Wall Mount
OE-CA30WM-01



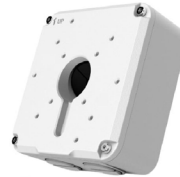
Indoor/Outdoor 7" Junction Box
OE-CA00JB-01



30-Series Pole Mount Kit
with Outdoor Junction Box
OE-CA30PMKIT-01



30-Series Wall Mount
OE-CA30WM-01



Indoor/Outdoor 7" Junction Box
OE-CA00JB-01



Pole Mount Kit
OE-CA00PMK-01



30-Series Ceiling Mounted Pole Kit
with Pendant Cap
OE-CA30CPKIT-01



30-Series Pendant Cap
OE-CA30PC-01



Ceiling-Mounted Pole
OE-CA00CMP-01



30-Series Wall Mount Kit
with Pendant Cap
OE-CA30WMKIT-02



30-Series Pendant Cap
OE-CA30PC-01



Indoor/Outdoor Wall Mount
OE-CA00WM-01



30-Series Corner Mount Kit
with Pendant Cap
OE-CA30CMKIT-01



30-Series Pendant Cap
OE-CA30PC-01



Indoor/Outdoor Wall Mount
OE-CA00WM-01



Corner Mount
OE-CA00CM-01



30-Series Pole Mount Kit
with Pendant Cap
OE-CA30PMKIT-02



30-Series Pendant Cap
OE-CA30PC-01



Indoor/Outdoor Wall Mount
OE-CA00WM-01



Pole Mount Kit
OE-CA00PMK-02