



HARDWARE

OpenEye Cameras and Recorders

Powerful, yet flexible devices to fit your
business needs.

openeye.net

Table of Contents

OpenEye Web Services.....4

Cloud-Managed Recorders 6

OWS AI Analytics.....7

Cloud Cameras 8

Analytics-enabled Cameras 10

Form Factors 11

Cameras.....12

 Cloud Cameras.....12

 Domes.....15

 Turrets.....18

 Bullets 20

 Specialty.....22

Recorders 24

 NVR 24

 Server..... 26





OPENEYE WEB SERVICES

An Intelligent and Aware Cloud Video Platform

Secure and scale smart environments for your customers, employees, and students.

Combining the performance and reliability of local recording with the convenience and flexibility of the cloud, OpenEye Web Services produces a greater return on your investment, saves you time, and provides an easier, more secure surveillance solution. The open platform integrates easily with your existing devices and business systems so you can upgrade your surveillance—and enhance experiences for customers, employees and students alike.



Proactive Security for Your Business

OpenEye Web Services (OWS) provides actionable intelligence and improves operational efficiency so you can see the next opportunity to secure and scale your business.



Powerful Analytics

Uncover actionable insights tied to key business events with powerful AI-enabled analytics that enhance security while streamlining your operations.



Complete End-to-End Solution

Integrate access control, intrusion, point of sale, identity management and others thanks to the OWS open ecosystem for a more complete security solution.



Flexible Deployment Options

Use your existing cameras with an AI-equipped OWS recorder or deploy cloud cameras to scale without constraints on channel count or processing power.



Centralized Management

Remotely manage locations, devices and users from one convenient, central platform – streamlining security operations and reducing the burden on IT.



Software Updates

Receive software updates pushed directly from the cloud, ensuring all devices have the latest features and are protected from cybersecurity threats.



Retrofitting

Repurpose your existing cameras with an OpenEye AI-powered retrofit appliance to get next-gen technology without replacing your existing infrastructure.

Peace of Mind

Reduce risk, simplify compliance and ensure video is there when you need it with the powerful features available in OpenEye Web Services.

Increased Productivity

Save time with remote access to locations and devices and experience streamlined collaboration thanks to cloud-based tools.

Enhanced Visibility

AI-powered video analytics deliver the actionable insights you need to increase revenue, improve customer satisfaction and limit liability.



CLOUD-MANAGED RECORDERS

Scalable Solutions That Deliver Reliability and Performance

Unlock the full potential of your security with OpenEye recorders and OpenEye Web Services (OWS) AI analytics.

Built for reliability, performance, and scalability, OpenEye recorders provide a comprehensive and scalable surveillance solution designed to meet the diverse needs of any security infrastructure. With seamless integration into OpenEye Web Services, these recorders offer powerful server-side analytics as well as unparalleled remote access, management, and monitoring capabilities allowing users to efficiently oversee their security systems from anywhere.

Reliability

Record video locally regardless of connection to the internet or bandwidth, ensuring you have video when you need it most.

Cloud-Managed

Manage and access your system from anywhere with tools that keep your system up-to-date and alert you of any issues.

OWS AI Analytics

With server-side analytics, receive AI events from existing cameras, enhancing security without replacing your infrastructure.

Scalability

Meet the needs of small and large deployments with various storage configurations and upgrades.

OWS AI ANALYTICS

Get Actionable Intelligence With Your Existing Cameras

Deploy advanced, AI-powered analytics on an OpenEye server to gain next-gen technology without replacing your existing infrastructure.

OpenEye Web Services (OWS) AI analytics provide you with more actionable intelligence, natively available in OWS, enhancing the value from your existing video surveillance system. Harness the full power of OWS, receiving real-time notifications to email and mobile, or quickly search for these events on the timeline bar to easily locate the video you need.



Person / Vehicle

Gain actionable intelligence for a variety of use cases through person and vehicle detection on the edge.



Loitering and Line Crossing

Detect objects passing through a virtual line or area as well as loitering for more than a defined period of time.



Intrusion

Leverage real-time, AI-driven intrusion detection to strengthen security and enhance situational awareness.



Retail Analytics

Combine the power of video analytics with point-of-sale data in unique use cases such as when a customer is not present at time of transaction.



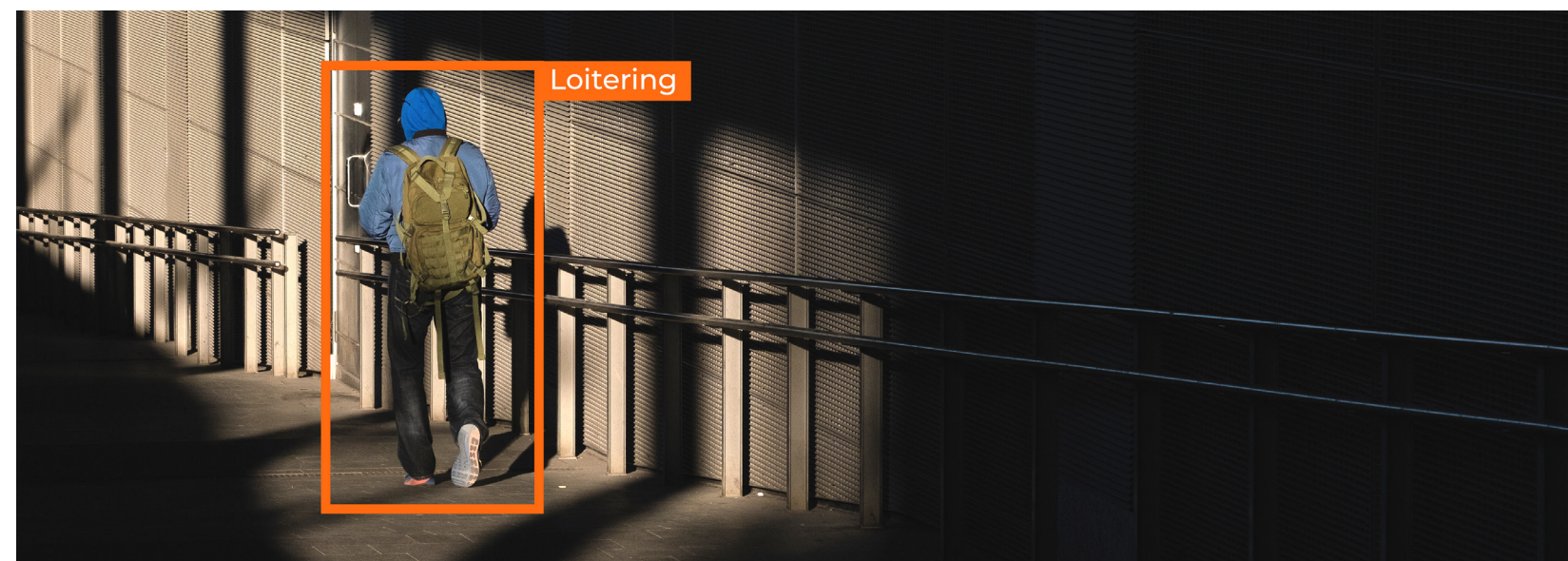
Search Filters

Search for persons or vehicles with specific attributes such as color or based on similar characteristics of existing video events.



Smart Motion

Receive more precise motion alerts with fewer false positives, ensuring more reliable and actionable notifications.



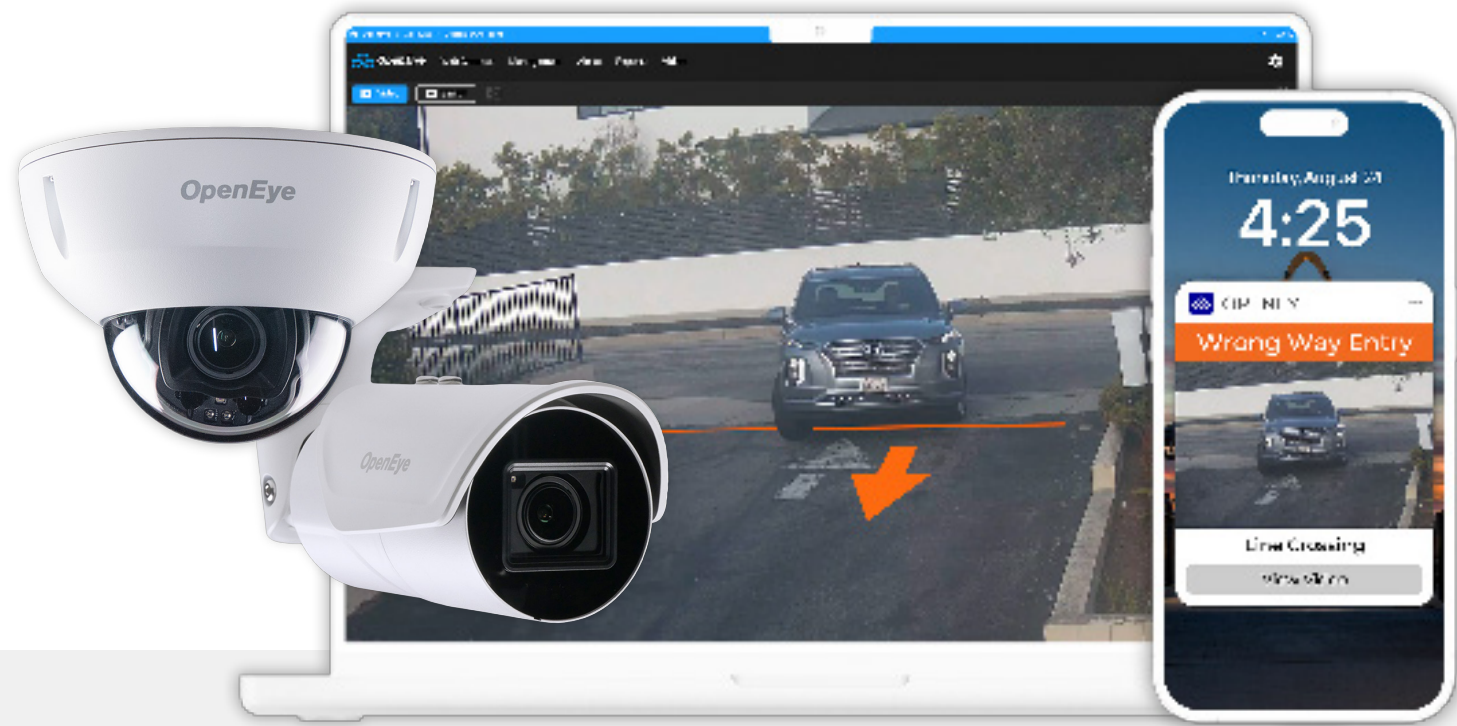


CLOUD CAMERAS

The Power of the Cloud in a Camera

Modernize your video security with an intelligent cloud camera that harnesses the power of OpenEye Web Services (OWS).

OpenEye's cloud cameras deliver an all-in-one video solution with onboard recording and dedicated analytics processor, providing the benefits of OWS in a flexible serverless architecture.



Onboard Recording

Record directly on the camera and access the video seamlessly from the cloud.

Analytics Capable

Take advantage of a dedicated analytics processor for a more intelligent solution.

Automatic Updates

Reduce the burden on IT with automatic software updates, delivering the latest features.

High Dynamic Range

Achieve crystal clear image quality in diverse lighting with advanced HDR technology.



Bring Flexible, Scalable Security to Your Business

OpenEye's cloud cameras bring powerful analytical capabilities to your business while keeping things simple with easy, scalable deployment.



All-In-One Solution

A camera, recorder and AI engine, all in one, cloud cameras are an easy and affordable solution for installations of one or two cameras, or scalable to hundreds per location.



Limitless Scalability

Expand with confidence knowing every camera added to a location brings its own storage and analytics processing power, allowing you to seamlessly scale over time.



Flexible Deployment

The ability to install cloud cameras as a standalone solution or add to locations with existing recorders makes OpenEye Web Services (OWS) one of the most flexible deployment architectures on the market.



Streamlined Management

Reduce the burden on IT with automatic software updates, health monitoring and centralized management of all device settings and user permissions, while leveraging remote access.



The Power of OWS

Use all of the capabilities of OWS with ease by connecting cameras directly to the cloud, which offers a powerful suite of management, analytics, alerting and reporting tools.



ANALYTICS-ENABLED CAMERAS

Smart Cameras, Smarter Decisions

Unlock valuable insights with AI-powered video analytics, transforming surveillance into actionable intelligence.

OpenEye's line of analytics-enabled cameras provide more accurate alerting through camera-based detection of person, vehicle and line crossing events. With event processing being performed by the camera hardware, you have more flexibility to deploy analytics across the full range of OpenEye recorders without concern for increased system load or recorder performance.



Intelligent Solutions

Experience more accurate events tied to persons, vehicles and line crossing that transform video into actionable intelligence.

Scalability

With event processing on the camera, you can add analytics to existing deployments without risk of negatively impacting recorder performance.

The Power of OWS

Combine the power of AI with the benefits of OpenEye Web Services (OWS) to alert on and search for events to deliver time savings and more insights into your business.

FORM FACTORS

A Camera Line That Meets Your Unique Needs

Select from a diverse array of camera options designed to deliver reliable, high-performance results in any deployment, ensuring system efficiency every time.



Dome
Discreet, vandal-resistant surveillance with wide coverage and flexible mounting options make dome cameras ideal for large spaces and high-risk areas.



Fisheye
Experience 360-degree panoramic views, reducing the need for multiple cameras and offering detailed monitoring with digital pan, tilt and zoom.



Bullet
Long-range vision, durable weather resistance and a deterrent presence make bullet cameras ideal for outdoor use.



Turret
Gain adjustable angles and enhanced night vision with infrared LEDs for compact, glare-free surveillance for both indoor and outdoor settings.



Multisensor
Combine multiple high-resolution sensors in one unit, providing broad coverage for complex environments while reducing installation and maintenance costs.



CAMERAS

Cloud Cameras



OE-CC51D5
CLOUD CAMERA



OE-CC51D8
CLOUD CAMERA

Environment	Outdoor	Outdoor
Resolution	5MP	8MP
Lens	2.7 ~ 13.5mm VF Motorized Zoom	3 ~ 9mm VF Motorized Zoom
Field of View	100° (wide) ~ 30° (tele)	115° (wide) ~ 36° (tele)
Wide Dynamic Range	DOL-HDR	DOL-HDR
IP Rating	IP67	IP67
IR Range	164'	164'
IK Rating	IK10	IK10
Operating Temperature	IR Off: -22°F ~ 140°F (-30°C ~ 60°C) IR On: -40°F ~ 122°F (-40°C ~ 50°C)	IR Off: -22°F ~ 140°F (-30°C ~ 60°C) IR On: -40°F ~ 122°F (-40°C ~ 50°C)
Input Voltage Type	12vDC/PoE+	12vDC/PoE+
Power Consumption	12vDC: 23W PoE+: 22.5W	12vDC: 19.2W PoE+: 22W
Dimensions	6.1 x 4.1" (155 x 103mm)	6.1 x 4.1" (155 x 103mm)
Country of Origin	Taiwan	Taiwan
Compliance	NDAA	NDAA
Analytics	OWS AI Capable	OWS AI Capable
Audio	Audio I/O (Terminal Connection)	Audio I/O (Terminal Connection)



OE-CC3020D5
CLOUD CAMERA



OE-CC52B5
CLOUD CAMERA



OE-CC53B8
CLOUD CAMERA

Outdoor	Outdoor	Outdoor
5MP	5MP	8MP
2.8mm Fixed	2.7 ~ 13.5mm VF Motorized Zoom	3 ~ 9mm VF Motorized Zoom
TBD	100° (wide) ~ 30° (tele)	115° (wide) ~ 36° (tele)
DOL-HDR	DOL-HDR	DOL-HDR
IP67	IP67	IP67
Up to 98'	164'	164'
IK10	IK10	IK10
-4° ~ 140°F (-20° ~ 60°C)	IR Off: -22°F ~ 140°F (-30°C ~ 60°C) IR On: -40°F ~ 122°F (-40°C ~ 50°C)	IR Off: -22°F ~ 140°F (-30°C ~ 60°C) IR On: -40°F ~ 122°F (-40°C ~ 50°C)
PoE	12vDC/PoE+	12vDC/PoE+
TBD	12vDC: 29.5W PoE+: 25W	12vDC: 25.9W PoE+: 25W
4.7 x 3.09" (120 x 78.5mm)	4.6 x 4.6 x 11.6" (118 x 118 x 295mm)	4.6 x 4.6 x 11.6" (118 x 118 x 295mm)
Taiwan	Taiwan	Taiwan
NDAA, TAA	NDAA	NDAA
OWS AI Capable	OWS AI Capable	OWS AI Capable
-	Audio I/O (Phoenix Connection)	Audio I/O (Phoenix Connection)



CAMERAS

Cloud Cameras



OE-CC3022T5
CLOUD CAMERA



OE-CC3214F12
CLOUD CAMERA

Environment	Outdoor	Outdoor
Resolution	5MP	12MP
Lens	2.8mm Fixed	1.95mm Fixed
Field of View	TBD	TBD
Wide Dynamic Range	DOL-HDR	DOL-HDR
IP Rating	IP67	IP67
IR Range	Built-in IR & White LEDs Up to 98'	Up to 65'
IK Rating	IK10	IK10
Operating Temperature	-4° ~ 140°F (-20° ~ 60°C)	-4° ~ 140°F (-20° ~ 60°C)
Input Voltage Type	12vDC/PoE	12vDC/PoE+
Power Consumption	TBD	TBD
Dimensions	4.7 x 4.18" (120 x 106.2mm)	5.9 x 2.55" (150 x 65mm)
Country of Origin	Taiwan	Taiwan
Compliance	NDAA, TAA	NDAA, TAA
Analytics	OWS AI Capable	OWS AI Capable
Audio	-	Audio I/O (Terminal Connection)

Domes



OE-C3212D4-S
IP DOME CAMERA



OE-C3212D8-S
IP DOME CAMERA

Outdoor	Outdoor
4MP	8MP
2.7 ~ 13.5mm VF, AF Zoom Lens	28 ~ 12mm VF, AF Zoom Lens
104° ~ 30°	109° ~ 31°
True WDR @ 4MP	True WDR @ 8MP
IP67	IP67
131'	98'
IK10	IK10
-22°F ~ 140°F (-30°C ~ 60°C)	-22°F ~ 140°F (-30°C ~ 60°C)
12vDC/PoE	12vDC/PoE
7W	9W
5.8 x 4.4" (148 x 111mm)	5.8 x 4.4" (148 x 111mm)
China	China
NDAA	NDAA
Analytics-enabled	Analytics-enabled
Audio I/O (Phoenix Connection) Built-in Microphone	Audio I/O (Phoenix Connection) Built-in Microphone



CAMERAS

Domes



OE-C1011D4-S
IP DOME CAMERA



OE-C1013D4-S
IP DOME CAMERA

Environment	Indoor	Indoor
Resolution	4MP	4MP
Lens	2.8mm Fixed	4.0mm Fixed
Field of View	103°	84°
Wide Dynamic Range	True WDR @ 4MP	True WDR @ 4MP
IP Rating	-	-
IR Range	98'	98'
IK Rating	-	-
Operating Temperature	-22°F ~ 131°F (-30°C ~ 55°C)	-22°F ~ 131°F (-30°C ~ 55°C)
Input Voltage Type	12vDC/PoE	12vDC/PoE
Power Consumption	4.5W	5W
Dimensions	4.3 x 2.4" (108 x 61mm)	4.3 x 2.4" (108 x 61mm)
Country of Origin	China	China
Compliance	NDAA	NDAA
Analytics	Analytics-enabled	Analytics-enabled
Audio	Audio I/O (Terminal Connection) Built-in Microphone	Audio I/O (Terminal Connection) Built-in Microphone



OE-C3011D4-S
IP DOME CAMERA



OE-C1012D2-S
IP DOME CAMERA



OE-C1014D4-S
IP DOME CAMERA

Indoor	Outdoor	Outdoor
4MP	2MP	4MP
2.7 ~ 13.5mm VF, AF Zoom Lens	2.8mm Fixed	2.8mm Fixed
103° (wide) ~ 32° (tele)	105°	101°
True WDR @ 4MP	True WDR @ 2MP	True WDR @ 4MP
-	IP67	IP67
98'	98'	98'
-	IK10	IK10
-22°F ~ 131°F (-30°C ~ 55°C)	-22°F ~ 140°F (-30°C ~ 60°C)	-22°F ~ 140°F (-30°C ~ 60°C)
12vDC/PoE	12vDC/PoE	12vDC/PoE
6.5W	4.5W	4.5W
4.9 x 3.9" (126 x 100mm)	4.3 x 3.2" (109 x 81mm)	4.3 x 3.2" (109 x 81mm)
China	China	China
NDAA	NDAA	NDAA
Analytics-enabled	Analytics-enabled	Analytics-enabled
Audio I/O (Terminal Connection) Built-in Microphone	Audio I/O (Bare Wire Connection)	Audio I/O (Bare Wire Connection)



CAMERAS

Turrets



OE-C1024T5-S
IP TURRET CAMERA



OE-C1016T2-S
IP TURRET CAMERA

Environment	Outdoor	Outdoor
Resolution	5MP	2MP
Lens	1.68mm Fixed	2.8mm Fixed
Field of View	180°	106°
Wide Dynamic Range	True WDR @ 5MP	True WDR @ 2MP
IP Rating	IP67	IP67
IR Range	66'	98'
IK Rating	IK10	-
Operating Temperature	-22°F ~ 140°F (-30°C ~ 60°C)	-22°F ~ 140°F (-30°C ~ 60°C)
Input Voltage Type	12vDC/PoE	12vDC/PoE
Power Consumption	5.5W	5W
Dimensions	4.4 x 3.7" (111 x 93mm)	4.4 x 3.7" (110 x 94mm)
Country of Origin	China	China
Compliance	NDAA	NDAA
Analytics	Analytics-enabled	Analytics-enabled
Audio	Built-in Microphone	Built-in Microphone



OE-C1018T4
IP TURRET CAMERA

Outdoor	Outdoor	Outdoor
4MP	4MP	8MP
2.8mm Fixed	2.7 ~ 13.5mm VF, AF Zoom Lens	2.8 ~ 12mm VF, AF Zoom Lens
97°	103° (wide) ~ 29° (tele)	105° (wide) ~ 31° (tele)
True WDR @ 4MP	True WDR @ 4MP	True WDR @ 8MP
IP67	IP67	IP67
98'	131'	131'
-	IK10	IK10
-22°F ~ 140°F (-30°C ~ 60°C)	-22°F ~ 140°F (-30°C ~ 60°C)	-22°F ~ 140°F (-30°C ~ 60°C)
12vDC/PoE	12vDC/PoE	12vDC/PoE
8W	7W	8.16W
4.6x 3.8" (118 x 96mm)	5.1 x 4.3" (129 x 110mm)	5.1 x 4.3" (129 x 110mm)
China	China	China
NDAA	NDAA	NDAA
Edge Analytics Not Supported	Analytics-enabled	Analytics-enabled
Built-in Microphone Built-in Speaker	Built-in Microphone	Built-in Microphone



OE-C3012T4-S / OE-C3012T4B-S
IP TURRET CAMERA



OE-C3012T8-S
IP TURRET CAMERA



CAMERAS

Bullets



OE-C2212B4
IP BULLET CAMERA

Environment	Outdoor	Outdoor
Resolution	4MP	4MP
Lens	2.8 ~ 12mm VF, AF, Zoom Lens	2.8mm Fixed
Field of View	86° ~ 36°	101.5°
Wide Dynamic Range	True WDR @ 4MP	True WDR @ 4MP
IP Rating	IP67	IP67
IR Range	164'	98'
IK Rating	-	-
Operating Temperature	-22°F ~ 140°F (-30°C ~ 60°C)	-22°F ~ 140°F (-30°C ~ 60°C)
Input Voltage Type	12vDC/PoE	12vDC/PoE
Power Consumption	9.6W	5.5W
Dimensions	8.1 x 2.9 x 2.9" (206 x 73 x 73mm)	6.5 x 2.5 x 2.5" (166 x 62 x 62mm)
Country of Origin	China	China
Compliance	NDAA	NDAA
Analytics	Edge Analytics Not Supported	Edge Analytics Not Supported
Audio	Built-in Microphone	Built-in Microphone



OE-C2214B4
IP BULLET CAMERA



OE-C2012B4-S
IP BULLET CAMERA

Outdoor	Outdoor
4MP	8MP
2.7 ~ 13.5mm VF, AF, Zoom Lens	2.8 ~ 12mm VF, AF, Zoom Lens
103° (wide) ~ 30° (tele)	105° (wide) ~ 31° (tele)
True WDR @ 4MP	True WDR @ 8MP
IP67	IP67
164'	164'
IK10	IK10
-22°F ~ 140°F (-30°C ~ 60°C)	-22°F ~ 140°F (-30°C ~ 60°C)
12vDC/PoE	12vDC/PoE
8.5W	9.5W
9.5 x 3.4 x 3.0" (240 x 86 x 76mm)	9.5 x 3.4 x 3.0" (240 x 86 x 76mm)
China	China
NDAA	NDAA
Analytics-enabled	Analytics-enabled
Audio I/O (Phoenix Connection)	Audio I/O (Phoenix Connection)



CAMERAS

Specialty



OE-C9112F12
360° IP CAMERA



OE-C8213
PTZ IP DOME CAMERA



OE-C9912M20
OUTDOOR MULTISENSOR CAMERA

Environment	Outdoor	Outdoor
Resolution	12MP	3MP
Lens	1.65mm Fisheye	4.3 ~ 170mm VF, AF, Zoom Lens
Field of View	180°	62° (wide) ~ 2° (tele)
Wide Dynamic Range	True WDR	True WDR
IP Rating	IP66	IP66
IR Range	16'	-
IK Rating	IK10	IK10
Operating Temperature	-22°F ~ 131°F (-30°C ~ 55°C)	-40°F ~ 122°F (-40°C ~ 50°C)
Input Voltage Type	12vDC/PoE	24vAC/PoE+
Power Consumption	12vDC: 11.16W PoE: 12.95W	25.4W
Dimensions	5.1 x 2.3" (130x58mm)	8.2 x 11.1" (210 x 279mm) w/ sunshield
Country of Origin	Taiwan	Taiwan
Compliance	NDAA, TAA	NDAA, TAA
Analytics	Edge Analytics Not Supported	Edge Analytics Not Supported
Audio	Audio I/O (Bare Wire Connection)	-

Outdoor
20MP, 4x 5MP
2.7 ~ 13.5mm, VF, AF, Zoom Lens
103° (wide) ~ 34° (tele)
True WDR
IP66
131'
IK10
-40°F ~ 131°F (-40°C ~ 55°C)
24vDC/24vAC/PoE++
40W
13.9 x 13.9 x 11.6" (352 x 352 x 295mm)
Taiwan
NDAA, TAA
Edge Analytics Not Supported
Audio I/O (Phoenix Connection)



RECORDERS

Appliances



OE-MV

OE-MD GEN 3

OE-MB

RECORDING	Max Channels	24	24
	Built-In Ports	-	8 or 16 PoE Ports
	Max Recording Rate	100 Mbps	150 Mbps
	Audio Support	IP Camera Audio (dependent on camera)	
	OWS AI Analytics***	Smart Motion Channels: 8	Smart Motion Channels: 24
CONNECTIONS	Video Outputs	2 x HDMI®	1 x HDMI®, 1 x Display Port
	Maximum Display Resolution	4K	4K (HDMI®) / 4096x2160 (DP)
	Dedicated Client Network	Yes	Yes
	Dedicated Camera Network	Yes	Yes
	Alarm Sensor Inputs	-	-
	Digital Relay Outputs	-	-
GENERAL	Operating System	Linux	Linux
	Power Supply	60W**	8CH: 180W / 16CH: 200W**
	Power Rating	12VDC, 5A	8CH: Input: AC 100~240V, 2.5A, 50-60Hz 16CH: Input: AC 100~240V, 3.5-2.5A, 50-60Hz
	Max Power Consumption	40W	8CH: Max 125W / 16CH: Max 200W
	PoE Switch Load	-	8CH: 100W / 16CH: 120W
	Max Operating Temperature	104°F (40 °C)	104°F (40 °C)
RECORDER	Dedicated OS SSD Drive	Yes	Yes
	Max Storage Configuration	40TB	8CH: 16TB / 16CH: 48TB
	Storage Drives (Qty)	2	8CH: 1 / 16CH: 2
	Dimensions	W: 14.4 x H: 1.8 x D: 12.6" (366 x 44 x 316mm)	W: 8.7 x H: 1.7 x D: 10.8" (221 x 44 x 275mm) W: 11.8 x H: 1.7 x D: 11" (300 x 44 x 280mm)
	Unit Weight	8.2lbs (3.71kg) / 8.6lbs (3.9kg) / 9lbs (4.08kg)	3.5lbs (1.59kg) / 5lbs (2.27kg)
	Rack Mount	Rack Mount Ears Included	Mounting Hardware Included
	Country of Origin	Taiwan	Taiwan
	Compliance	NDAA	NDAA, TAA

24
16 BNC Ports
150 Mbps
IP Camera Audio (dependent on camera)
Smart Motion Channels: 24
1 x HDMI®, 1 x VGA
4K (HDMI®) / 1080P (VGA)
Yes
Yes
4 x Form A contacts
2 x Form A contacts
Linux
150W
Input: AC 100~240V, <2.5A, 50-60Hz
Max 70W
-
104 °F (40 °C)
Yes
40TB
2
W: 17.3 x H: 1.9 x D: 13.6" (440 x 49 x 344mm)
9.5lbs (4.4kg)
Rack Mount Ears Included
Republic of Korea
NDAA

*Requires performance upgrade
**External Power Supply
***Channel count may vary based on hardware specifications and operating conditions.
For more information, visit: <https://go.openeye.net/openeye-analytic-support>



RECORDERS
Servers



OE-MT GEN 2

OE-MM GEN 2

OE-MK GEN 4

OE-MH GEN 3

RECORDING	Max Channels	32 / 96*	JBOD: 64 / 96 RAID: 64 / 128*
	Built-In Ports	-	-
	Max Recording Rate	300 Mbps	JBOD: 300 Mbps RAID: 400 Mbps
	Audio Support	IP Camera Audio (dependent on camera)	
	OWS AI Analytics***	Smart Motion Channels: 64 OWS AI Channels: 20	Smart Motion Channels: 64* OWS AI Channels: 20
CONNECTIONS	Video Outputs	1 x HDMI®, 1 x DisplayPort, 1 x VGA	1 x HDMI®, 2 x DisplayPort, 1 x D-SUB
	Maximum Display Resolution	4K (HDMI®) / 4096 x 2160 (DP) / 1080P (VGA)	4K (HDMI®) / 4096 x 2160 (DP) / 1080P (D-Sub)
	Dedicated Client Network	Yes	Yes
	Dedicated Camera Network	Yes	Yes
	Alarm Sensor Inputs	4 x Form A contacts	4 x Form A contacts (optional)
GENERAL	Digital Relay Outputs	4 x Form A contacts	4 x Form A contacts (optional)
	Operating System	Linux (standard) / Windows (optional)*	JBOD: Linux (Windows optional) RAID: Microsoft Windows
	Power Supply	250W	500W
	Power Rating	Input: AC 100~240V, 3.5-1.5A, 50-60Hz	Input: AC 100~240V, 8~4A, 50-60Hz
	Max Power Consumption	170W	JBOD: Max 287W RAID: Max 311W
	PoE Switch Load	-	-
RECORDER	Max Operating Temperature	104 °F (40 °C)	104 °F (40 °C)
	Dedicated OS SSD Drive	Yes	Yes
	Max Storage Configuration	96TB	JBOD: 96TB RAID: 48TB (36TB usable)
	Storage Drives (Qty)	4	4
	Dimensions	W: 17.25 x H: 3.75 x D: 11.8" (428 x 95.25 x 299.72mm)	W: 16.9 x H: 3.5 x D: 18" (429.2 x 89 x 457.2mm)
	Unit Weight	12.5lbs (5.67kg)	27lbs (12.25kg)
	Rack Mount	Rack Mount Ears Included	Rack Mount Ears Included
	Country of Origin	USA	USA
	Compliance	NDAA	NDAA

JBOD: 96 RAID: 128	JBOD: 96 RAID: 128
-	-
JBOD: 300 Mbps RAID: 400 Mbps	JBOD: 300 Mbps RAID: 400 Mbps
IP Camera Audio (dependent on camera)	
Smart Motion Channels: 64* OWS AI Channels: 20	Smart Motion Channels: 64 OWS AI Channels: 20
1 x HDMI®, 2 x DisplayPort, 1 x D-Sub	
4K (HDMI®) / 4096 x 2160 (DP) / 1080P (D-Sub)	
Yes	Yes
Yes	Yes
4 x Form A contacts (optional)	4 x Form A contacts (optional)
4 x Form A contacts (optional)	4 x Form A contacts (optional)
Microsoft Windows	Microsoft Windows
500W	650W
Input: AC 100~240V, 8-4A, 50-60Hz	Input: AC 100~240V, 10-5A, 47-63Hz
JBOD: Max 331W RAID: Max 370W	JBOD: Max 432W RAID: Max 450W
-	-
104 °F (40 °C)	104 °F (40 °C)
JBOD: Dedicated Solid State Drive RAID: Dedicated Dual SSDs Configured as RAID 1	
JBOD: 128TB RAID: 96TB (84TB usable)	JBOD: 256TB RAID: 192TB (168TB usable)
8	16
W: 17.3 x H: 3.5 x D: 22" (438 x 89 x 557mm)	W: 17.2 x H: 5.2 x D: 26" (438 x 132 x 660mm)
38lbs (17.2kg)	77lbs (34.9kg)
Rack Slide Kit Included	Rack Slide Kit Included
USA	USA
NDAA	NDAA

*Requires performance upgrade
**External Power Supply
***Channel count may vary based on hardware specifications and operating conditions.
For more information, visit: <https://go.openeye.net/openeye-analytic-support>



[Product Unboxing Videos](#)



[Accessory Tree](#)



[Camera Model Schema](#)

Contact

1730 North Madson Street
Liberty Lake, WA 99019

TF: (888) 542-1103
P: (509) 232-5261

About OpenEye

OpenEye delivers a trusted cloud-managed video and data platform that provides actionable intelligence so you can protect and grow your business. The OpenEye Web Services (OWS) architecture streamlines video deployment and management at scale. Combining and analyzing event data with video, OWS delivers insights that enhance security and increase your bottom line.



For more information, visit openeye.net
or experience a demo at openeye.net/demo