



RADIUS SITE SYNC MANAGER

USER MANUAL

RADIUS SITE SYNC MANAGER SOFTWARE

RADIUS Site Sync Manager allows you to save your personal RADIUS settings to a network, and access those settings for use with any RADIUS-enabled device with a connection to that network. Custom Screens, Maps, and other settings can be used on any RADIUS unit on the network.

Installation

You can install the RADIUS Site Sync Manager on any personal computer (PC), laptop, or Windows-based recorder by downloading the program from www.openeye.net.

Note RADIUS must be installed in order for RADIUS Site Sync Manager to function.

Administrative Setup

After installing both RADIUS and RADIUS Site Sync Manager on your PC, follow these instructions to save your settings.

1. Ensure that you have a network folder available with read/write access.
2. Launch RADIUS and configure your sites.
3. Exit RADIUS.
4. Run the Site Sync Setup.
5. When you have configured your settings, **Browse** or type the location where you want to save these settings on your network.
6. Click **Save New**, and then type a name for this folder of saved settings.

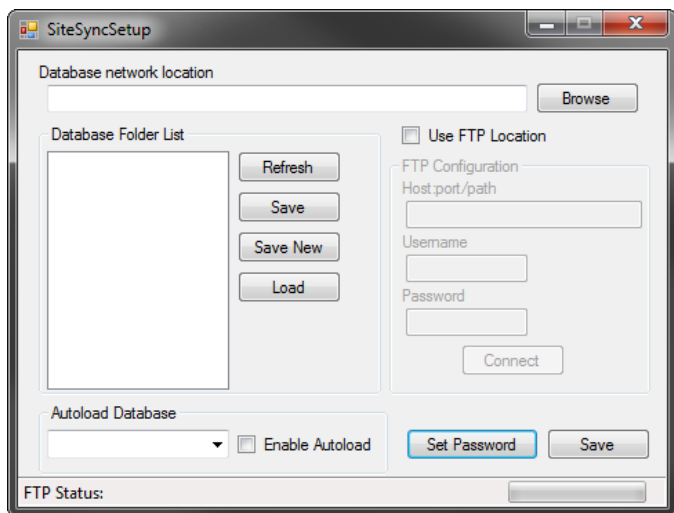
Access Your Settings

Once your connections are set up, you can use your settings from any RADIUS-enabled device with a connection to the network on which your settings are saved.

1. Install RADIUS.
2. Install RADIUS Site Sync Manager.
3. Ensure that your connection has access to the network location where the settings are saved.
4. Run the RADIUS Site Sync Manager.
5. Select the settings directory you want to use from the list.

Note Ensure that **Enable Autoload** is selected. This is required for the settings to be copied automatically.

SITE SYNC MANAGER SETTINGS



Using a Network Location

To access and save settings using a network connection, follow these instructions.

1. Navigate to the network location where your RADIUS settings are saved. Either type the location into the address bar, or click **Browse** to find the location.
2. The **Database Folder List** shows the settings folders that are available for use or to be edited. To use one, select the name of the settings folder, and then click **Load**.
3. Click **Refresh** to see the latest list of settings folders.
4. Click **Save** to save the current RADIUS configuration settings to the folder.
5. Click **Save New** to save the current RADIUS configuration settings as a new folder.

Using an FTP Location

To access and save settings using an FTP location, follow these instructions.

1. Select **Use FTP Location**.
2. Type a valid FTP server address in the **Host:port/path** field.
3. Type your **FTP Username**.
4. Type your **FTP Password**.
5. Click **Connect**.
6. The settings you have saved to your FTP site will appear in the **Database Folder List**.
7. Select the name of the settings folder, and then click **Load**.
8. Click **Refresh** to see the latest list of settings folders.
9. Click **Save** to save the current RADIUS configuration settings to the folder.
10. Click **Save New** to save the current RADIUS configuration settings as a new folder.

Autoload Database

The Autoload Database function allows RADIUS settings to be loaded for use by the current user. Select **Enable Autoload** to enable RADIUS Site Sync Manager to copy settings.

www.openeye.net

509-232-5261

© 2015 OpenEye

All other rights are reserved to OPENEYE. OPENEYE, and OpenEye, are registered trademarks of OPENEYE in the United States and elsewhere. All other brand and product names are trademarks or registered trademarks of the respective owners.