



SPOT MONITOR UTILITY SETUP INSTRUCTIONS

SPOT MONITOR UTILITY

The Spot Monitor Utility enables spot video functionality on network and hybrid recorders. You can use this utility to view video from specific camera channels on monitors that are separate from your recorder. This software runs locally on OpenEye Professional recorders (H-Series, N, Series, and X-Series).

The Spot Monitor Utility allows you to use multiple monitors to view camera channels. The utility designates which camera channels are viewed, and on which monitors. You can use up to two Spot Monitors to view up to 16 channels per monitor.

Installation

The Spot Monitor Utility is available as a download from the OpenEye website, and is also available bundled in the most current versions of Server Software.

Manual Download

To install the Spot Monitor Utility onto the desktop from the OpenEye website:

1. Go to www.openeye.net/partner-site/my-openeye

Note To access the Spot Monitor Utility installation link, you must be logged in to the OpenEye website.

2. Click the **Spot Monitor Utility** link under the Current Software tab.
3. Follow the Installation Wizard setup instructions to install the Spot Monitor Utility to the desktop.
4. After installation is complete, double-click the **Spot Monitor Utility desktop icon** to launch the program.

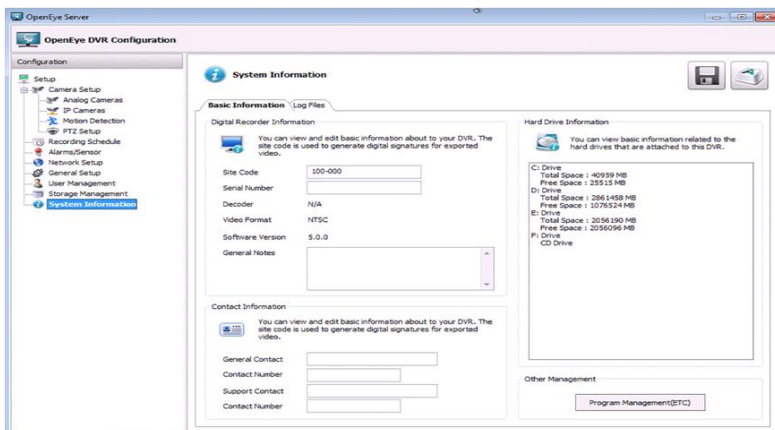
Note

If the installer is used to update a previous version of the Spot Monitor Utility that was bundled with Server Software, the updated version of the Spot Monitor Utility can only be uninstalled by uninstalling the Server Software.

Access through Server Software

To access the Spot Monitor Utility through Server Software version 5.0 or higher:

1. Click **Setup** in the Server Software menu.
2. Click **System Information** at the bottom of the Configuration menu.
3. Click **Program Management (ETC)**.



4. In the External Program Management list, click the **Show** button next to the listed Software Spot Monitor.

External Program Management							
Index	File Name	Desc	Status	Start	Stop	Show	Hide
1	Network Camera Ma...	Opens the OpenEye Network Camera Ma...	NOT RUN			Show	
2	Software Spot Monitor	Opens the Software Spot Monitor	NOT RUN			Show	
3	DDNS User Informati...	Dynamic DNS Configuration	NOT RUN			Show	
4	Information Collectio...	Collects DVR Information and sends that ...	NOT RUN			Show	
5	Perfmon.exe	Opens Performance monitor.	NOT RUN			Show	

Configuring the Spot Monitor Utility

Configure DVRs in the Spot Monitor Utility

Once you have finished installing the Spot Monitor Utility, launch the OpenEye Server Software to configure your settings.

1. In the **General Settings** tab, if the utility is installed on your recorder, select Installed on local DVR
-- Or--
If the utility is installed on your PC, select Specify DVR Information.
2. Enter **Username** and **Password**.
3. Enter the IP address and Port number of the desired recorder.
4. Click **Initialize**.

The screenshot shows the 'Spot Monitor Setup Utility' window. It has three tabs: 'General Settings' (selected), 'Display 1', and 'Display 2'. Below the tabs, there is a text prompt: 'Enter the network information to connect to the DVR.' There are two radio buttons: 'Installed on local DVR' (unselected) and 'Specify DVR information' (selected). Below these are four text input fields: 'Username' (containing 'admin'), 'Password' (containing '****'), 'IP Address' (containing '10.137.137.7'), and 'Port' (containing '2000'). To the right of the 'Username' field is an 'Initialize' button.

Configuring Individual Spot Monitors

The General Settings tab is where you will designate which recorder and associated cameras will display, and also which monitors are used as the Spot Monitor(s).

1. Click Identify Monitors. This will display a number on available monitors. Note which monitor number you want to display the Spot Monitor(s) on.
2. Check the Display 1 or Display 2 box, depending on how many Spot Monitors you wish to display, and then use the drop down menu to designate a monitor number for the display.

Note Camera names designated by Server Software can be seen on the Spot Monitor(s) if you check the **Display Camera Name** box.

Enable Displays and select monitors to view the Display on.

<input type="checkbox"/> Display 1	Monitor 1 ▼	Identify Monitors
<input type="checkbox"/> Display 2	Monitor 1 ▼	
<input type="checkbox"/> Display Camera Name		

Identify Monitors: This will scan for available monitors, making “Monitor 1,” “Monitor 2,” etc appear on each connected monitor. These monitors can be used as Spot Monitors.

Note If only one monitor is displaying a monitor number, connect an additional monitor(s) to the recorder using an HDMI cable.

Display Camera Name: This will display the camera names on the Spot Monitor(s).

Delay Setup: Check the Delay Setup box to designate a delay upon next startup of the Spot Monitor Utility. This will help ensure proper monitor detection. The default delay time is 30 seconds; though the delay option ranges from 1-60 seconds.



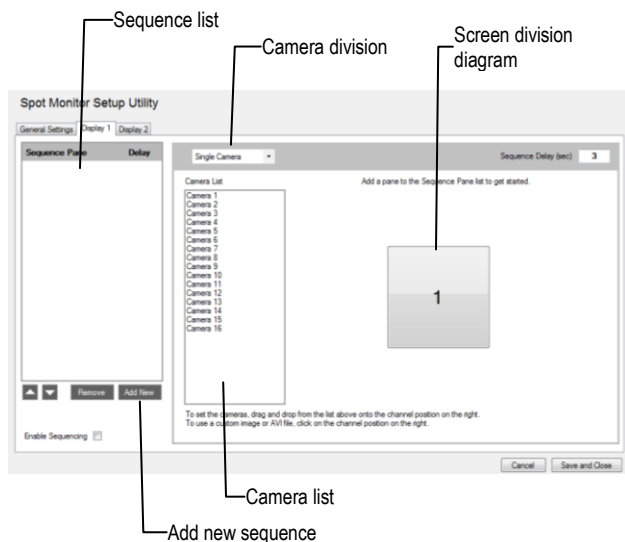
☐ Display Camera Name

☒ Delay Startup 30

3. Click **Save and Close**.

Note After you click **Save and Close**, the Spot Monitor Utility will minimize to the system tray. The Delay Setup will not take effect until the Spot Monitor Utility is closed and restarted.

Spot Monitor Display Setup



1. Click the **Display 1** tab.
2. Click **Add New** to add a Sequence.
3. Click **Single Camera**, and then select your desired Camera Division.
4. Click and drag your desired cameras from the **Camera List** into the screen division representation.
5. To enable multiple screen divisions to be seen on the monitor in sequence, select **Enable Sequencing**.

6. Click **Add New** to add a second sequence.
7. Repeat steps 3 and 4 for a second sequence.
8. To configure a second monitor, click the **Display 2** tab, and then repeat steps 2 -7 as needed.
9. When you have finished setting up your spot monitors, click **Save and Close**.

www.openeye.net

1-888-542-1103

© 2014 OpenEye

All other rights are reserved to OPENEYE. OPENEYE, and OpenEye, are registered trademarks of OPENEYE in the United States and elsewhere. All other brand and product names are trademarks or registered trademarks of the respective owners.